


interzum Highlights

New products 2023





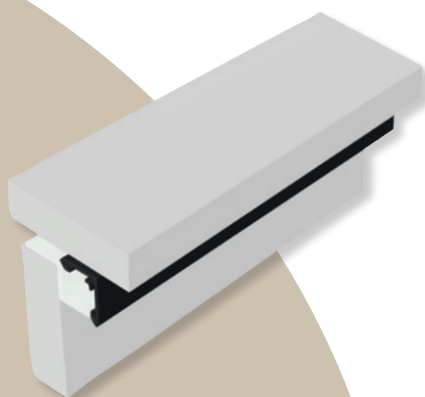
LED 2100/3100 SURFACE MOUNTED DOWNLIGHT.

Ideal lighting of the kitchen worktop.

The new surface mounted downlight has a very low installation height of just 6 mm. The non-contact sensor makes it easy to adjust the brightness, even with dirty hands. The push button is used for colour temperature adjustment (2.700 K–5.000 K) in accordance with the customer's requirements.

Available in 12V and 24V.

www.hafele.com.de/dc/kitchen-light



PLINTH PROFILE 5111.

Linear lighting. in the plinth.

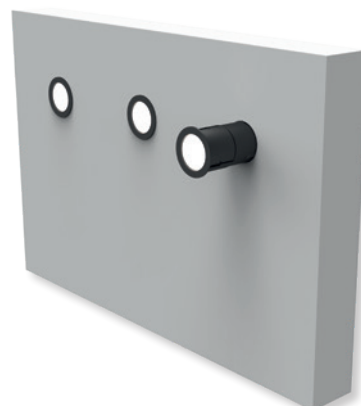
The new polycarbonate profile 5111 is used as a flexibly deployable profile on the plinth. This does not affect the plinth attachment to the cabinet. Installation is simple, modular and creates a homogeneous light pattern on the floor. At the same time, the LED strip light has mechanical protection.

MINI SPOT LED 2101/3101, 2102/3102.

Spot lighting in the plinth.

The Mini Spot LED 2101/3101, 2102/3102 is the ideal lighting for kitchen islands, stairs or display cabinets. The spotlight only needs a 12 mm drill hole, and impresses with its minimalist design.

Available in 12 V and 24 V.



NETWORKED LIGHT SOLUTIONS.

Dynamic, individual light concepts by integrating room lighting.



Light in furniture and the room grow together. Experiences can be created if both the light in the furniture and the light in the room work together – and is controlled uniformly.

This is now possible with the revision of the Nimbus Q Four, Modul Q, Cubic and Zen light families, as well as integrating these solutions into Häfele Connect. Making room lighting simple, comfortable and intelligent.

- > Plug & Play via Loox5 adapters and 24 Volts
- > Connectivity via Bluetooth chip – integration into a Mesh network
- > Operation via all Häfele Connect Mesh components such as the app, the wall-mounted push button, remote control, EnOcean or BLE modules with the familiar switch design from Gira or Jung, for example
- > Tunable White (multi-white): Setting the colour temperature from 2.700–5.000 Kelvin

www.hafele.com.de/dc/nimbus



CONNECT MESH APP 2.0 – NEW DESIGN, NEW FUNCTIONS.

Technical and design revision of the well-known Connect Mesh app.

The Häfele Connect Mesh app was developed together with the market launch of Loox5 and Häfele Connect in 2019. Now, after almost 4 years, a major update to version 2.0 has taken place.

Noticeable right from the start: the new design based on our Loox5 product range. The new look & feel provides a modern and attractive appearance, and encourages the use of the Connect system. The usability and the ease of commissioning and use of the system was the second major focus of development.

- > Clear user guidance during the set-up processes
- > Clear assignment and representation of the controlled lights and devices
- > Clear reduction and improved orientation in the app

New functions are also being introduced with the publication of Connect Mesh App 2.0:

- > Time-based control of devices, groups and scenes
- > Integration of the new Connect Gateway
- > Connecting to Amazon Alexa voice control



HÄFELE ELECTRICAL KITCHEN APPLIANCES.

Different equipment, numerous functions.

- > Excellent price-performance ratio.
- > Wide range of products.
- > Very appealing appearance with unique features.
- > Manufacturer service with 5-year full warranty.

With the new product range, Häfele can supply about forty electrical appliances which cover all areas in the kitchen: baking, cooking, washing, cooling, wine cooling and extraction.

When selecting the devices, Häfele has consistently paid attention to having a very good price-performance ratio and high energy efficiency.

Customers will also benefit from direct manufacturer service with a 5-year full warranty, 100 percent delivery capability at guaranteed prices and hobs, ovens, hoods and more with top-class quality.

NEW



HÄFELE WASTE SEPARATION SYSTEM.

Suitable for any requirement.

The modern waste separation system from Häfele with intelligent and functional accessories is available at different heights, and is quick and easy to install. The modular system makes different combinations possible for even more flexible adaptation to the needs of the individual household.

NEW



Waste separation system for inserting into all of the most popular drawer systems:

- > Cabinet width 450 mm–900 mm
- > 3 different heights (267/367/414 mm)
- > Fits into all of the most popular drawer systems with an internal depth of 400 mm–500 mm
- > Additional pull out shelf for optimum use of space
- > Greater flexibility by using a modular system



Waste bins behind hinged doors:

- > From cabinet width of 400 mm
- > 2 different heights (390/440 mm)
- > Divider (optional) for use of multiple bin bags
- > Large opening radius
- > Additional storage space provided by storage compartment



MATRIX BOX P.

Product range extension: drawer side height of 180 mm.

The trend towards high drawer applications has continued.

In order to take this trend into account, Häfele now provides two solutions with the Matrix Box P premium double-walled drawer side system:

The proven application with the side railing is being supplemented by the newly developed drawer side height of 180 mm.

Customers now have the option of also manufacturing high, closed pull outs within the drawer side system. The high drawer side can be the preferred version in many applications, since it closes off the drawer over a large area at the side, therefore ensuring even better use of the storage space.

The design language is identical to that of the heights of 92 mm and 115 mm. The functionality is supplemented by integrated tilt adjustment, which guarantees symmetrical gap patterns and flat front panels.

We want to give the Matrix Box P product range another boost with this product range extension. We are constantly working on improvements and additions to the product range at Häfele together with our development department.

www.hafele.com.de/dc/matrix-box-p



MATRIX EXTRA.

Individual drawer interior division using a flexible plug system.

We now also offer our customers suitable accessories for our existing Matrix Box systems with an attractive price-performance ratio. The Matrix Extra product range is being gradually extended – we are starting with 2 products: Häfele Matrix Extra DD (Drawer Divider) & Häfele Matrix SI (Siphon Insert).

The Matrix Extra DD drawer compartment system consists of plastic panels with a length of 1100 mm, which can be individually shortened and combined with connection pieces into an individually configured interior division system.

The panels and connectors are available in 2 heights (60 mm and 90 mm), 3 colours (white, grey and anthracite), with an elegant matt finish, and optimally coordinated with the Matrix Box Slim A.



NEW

www.hafele.com.de/dc/matrix-extra

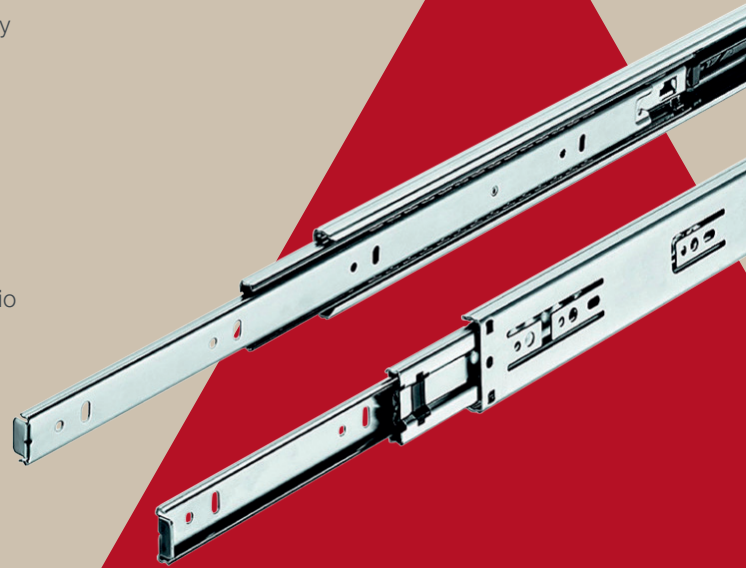


MATRIX RUNNER BB.

The Matrix Runner BB ball bearing runners as a full extension are ideal for wooden drawers. The ball bearing runners support and reliably move up to 45 kg of drawer contents. The runner is optionally available with soft closing and self closing mechanisms and with the Push-to-Open automatic opening mechanism. The Matrix Runner S30 ball bearing runner is also available as overextension. All of these combine good running characteristics and easy installation. The laterally installed runners create maximum storage space height in the drawers.

- > BB S – economical solution in the entry-level segment
- > BB A – German Quality with an outstanding price-performance ratio

www.hafele.com/de/dc/matrix-runner



METALLA 310.

Colour extension with Metalla 310.

Being without the dark concealed hinge would no longer be imaginable in the design area, and this development is also playing an increasingly important part in the mid-price sector. In order to take this trend into account, Häfele now provides a low-cost version in the dark concealed hinge area: The well-known and popular Metalla 310, which is now also available in black.

The well-tryed hinge system is complemented by the colour extension, and therefore provides solutions with an optimised design for many applications and mounting plates.

Take advantage of this addition to the product range to impress existing and new customers with our Metalla 310 range of hinges.

www.hafele.com/de/dc/metalla-310



NOW ALSO
AVAILABLE IN
BLACK





SLIDO F-LINE44.

Floor-to-ceiling refinement.

A front fitting for 19 to 40 mm-thick sliding doors weighing up to 80 kg. Also ideal for floor-to-ceiling furniture yet quickly installed: No tools are required to install the running and guide tracks for the soft and self closing mechanisms or for adjusting the door overlay, and the runner components are automatically hooked in. This puts the high-quality Slido F-Line44 at the cutting edge of technology. Design enthusiasts can also freely combine it with aluminium frame doors.

For pivot sliding starter.

Long lifetime and affordable technology: Many parking systems are either expensive or in a small format. On the other hand, single-door applications up to an impressive height of 2300 mm are possible in the low-cost entry-level segment with Slido F-Park71. Parking the doors at the side creates free space, and speeds things up for the fitters due to the ease of construction. The solution also comes with dampened hinges for pleasant use.



SLIDO F-PARK71.



SLIDO F-FLUSH57.

Simple and beautiful.

Be it a base unit, knee wall shelf or kitchen wall unit: Slido F-Flush57 has been developed as a cheap and uncomplicated alternative for situations where you would otherwise pay a lot of money for a flush sliding solution. The doors, from a thickness of just 8 mm, produce an aesthetic front with a flush appearance. The system also impresses with its very quick assembly.

SLIDO F-HANDLE26.

ALSO
AVAILABLE IN
BLACK

Functional area.

- > Handle profile product range for Vorfront and Infront doors
- > Door height up to 2500 mm, door thickness: $\geq 16-25$ mm

Features.

L-connection without harpoon-type flange

- > No additional processing required
- > For flexible use with different door thicknesses

T-groove for brush seal integrated in handle

- > Dust protection in the cabinet

Design elements on the handle

- > Visual modern appeal of the furniture

3 colour variants

- > for max. design options

Recess for straightening fitting

- > Door can be optimally aligned
- > Subsequent installation possible

Recess for LED strip light and diffuser

- > Cabinet lighting integrated in the handle

TE601 WORK WITH NEW UNDER UNIT DRAWERS.

New electrically height-adjustable table base series.

Häfele is launching the new TE601 Work table base series with an excellent price/performance ratio onto the market. The main arguments for the electrically height-adjustable frame are the load bearing capacity of 120 kg, the improved collision detection and the faster column speed. Due to the well thought-out range of variants, TE601 Work can be used individually, and the 90° corner solution also opens up a wide range of applications. The two Classic and Style design lines incorporate perfectly into the modern office, and can be supplemented with the new under-mounted drawers in an excellent way.

The felt organizer impresses with its appealing design and pleasant feel. The interior compartments are designed for tablets, smartphones and small items, and a pull-out stop prevents the felt shell from falling out.

On the other hand, the core of the alternative steel under-mounted drawer consists of the smoothly operating runners, which provide a full extension and an integrated catch and are not visible in the extended condition because of the clever construction. The contents can be securely stowed away with a cylinder lock, and a felt mat reduces possible noise and protects sensitive objects from scratching.



www.hafele.com.de/dc/office



HÄFELE FREE SPACE – LESS VOLUME. MORE FREE SPACE.

The cleverest connection
of less and more.



**COMPACT
POWERFUL
EFFICIENT**

The innovative Häfele Free space provides completely new freedom of motion. This provides more options regarding the visual and technical design of furniture. Free space relies on the outstanding product properties of the existing Free family and, with its unique design, provides the cleverest combination of less and more in the global furnishing market.

Free space 1.11 and 1.8 push are characterised by their unique performance capability, which covers up to 80 % of all of the most popular stay flap applications via their different model variants. This "more" thus allows using the same product series for a much wider range of applications than previous hingeless stay flap fittings. The remaining range of stay flap applications with heavy flap weights of up to 15 kg is covered by Free space 6.15 and 5.15 push.

Free space can be used for flaps with or without furniture handles:

- > Free space 1.11 and 6.15 model series for flaps with handles
- > Free space 1.8 push and 5.15 push model series for flaps without a handle with push-to-open function; the associated push catches are colour coordinated with the Free space fittings

www.hafele.com.de/dc/free-space



HÄFELE DIALOCK.

LockerLock 300 locker lock –
for changing room cabinets and security cabinets.

The new locker lock, LockerLock 300, with its Connect Modular Core (CMC) technology already available on board, makes seamless integration into the Dialock wireless online network child's play. It complements the Häfele Dialock product range with another component with online capability. The same drilling pattern as the one used for its predecessor the LL 200 is used to attach the LL 300 to cabinet doors made from HPL and wood up to 17 mm thick and also metal up to 19 mm thick. As a result, an upgrade to the latest technology is particularly easy to achieve. The battery-operated LL 300 impresses with its range of supported transponder technologies, from Tag-it to MIFARE (Classic and DESFire) to Smartphone Key Ready and with new features such as "Free Choice of Locker". The LL 300 can be managed using the Dialock Manager app in order for entry into the online networked Dialock world. The Dialock 2.0 software is available for more demanding requirements and a greater number of access points.

Dialock – The future-proof locking system which fulfils individual and increasing requirements.



HÄFELE DÉCO H23 COLLECTION.

Function and aesthetics go hand in hand – with an artistic result.

Häfele is presenting a compendium of innovative design ideas with the 2023 Déco collection. From handles with a soft, hand-caressing feel, to unique handles in the harsh industrial style to icons in the style of a modern classic. However, as multi-faceted as the designs are, they combine the intention of bringing together design and functionality at the highest level. In this sense, you will be surprised and inspired. Join us on an exciting design journey which invites you to see but also feel and comprehend!

- > Eleven up-to-date own house handle designs with more than 100 individual items
- > German Design Award Special 2023: Models H2350 and H2355
- > Designer handles with matching knobs as a product family
- > Trend elements: Knurling structure, graphite coloured, gold coloured, matt black ...
- > High quality level: German Quality

www.hafele.com.de/dc/h23



MORE SPACE IN LIVING AND SLEEPING AREAS.

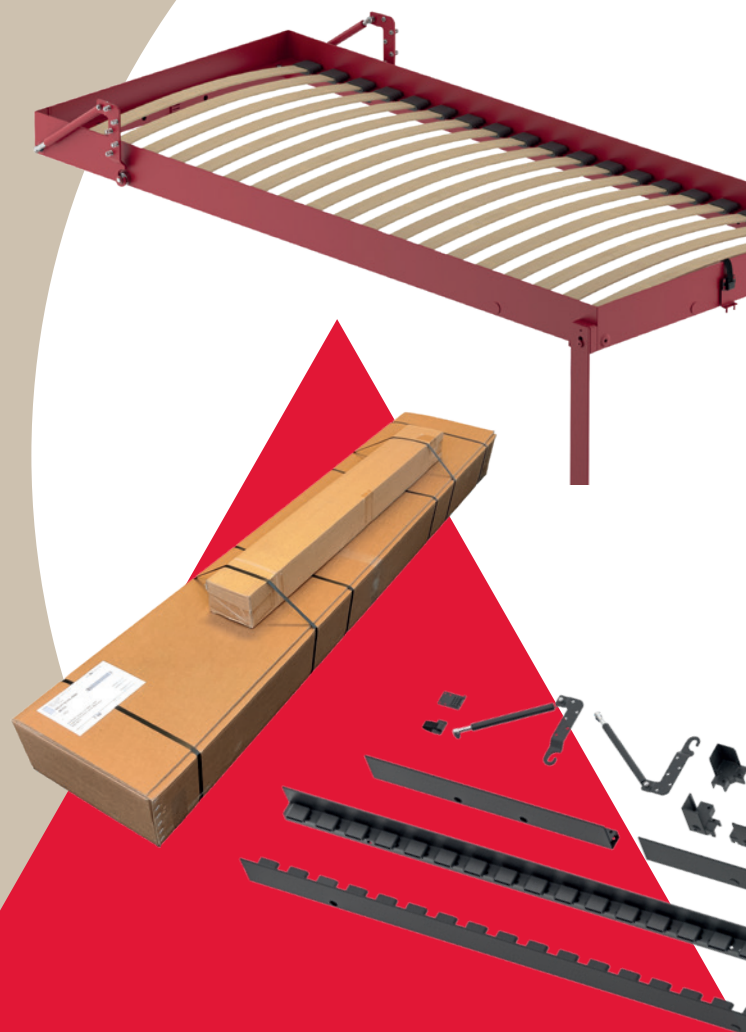
New Häfele Teleletto foldaway bed series.

We have developed a modern, modular system for foldaway bed and sofa bed solutions under the Häfele Teleletto name which is already well-known that covers all installation situations because of its versatility.

The folding mechanism is concealed, and a great deal of value has been placed on creating an appealing, high-quality look. Cosy ambience and maximum functionality are combined.

Living in the smallest space is not only an issue in micro-apartments, youth rooms, student accommodation and guest rooms, but flexible space usage concepts are also becoming increasingly interesting in the hotel area. Multi-functional rooms can be used to optimise room utilisation and generate additional revenue.

www.hafele.com/de/dc/teleletto



- > Little opening and closing force required due to low-noise gas-filled strut
- > Quick and easy installation thanks to plug-in frame system
- > Compact delivery package for optimising transport logistics and costs
- > Comfortable seat height of approx. 60 cm
- > Comprehensive range of variants:
 - All of the most popular bed sizes possible (W=700–2.000 mm, L=1.800 mm–2.300 mm, max. 2.000 x 2.100 mm)
 - End-mounted and side-mounted beds
 - With/without sofa
 - Different foot variants (angular foot, stirrup foot)
 - RAL colours and special sizes can be selected in steps of 10 cm from a quantity of 1

Häfele SE & Co KG | Postfach 12 37 | Adolf-Häfele-Str. 1 | D-72202 Nagold
Phone: +49 (0) 74 52/95-0 | **Fax:** +49 (0) 74 52/95-200 | **E-Mail:** info@haefele.de

www.hafele.com

732.01.481-en-5/23-1-SYS