



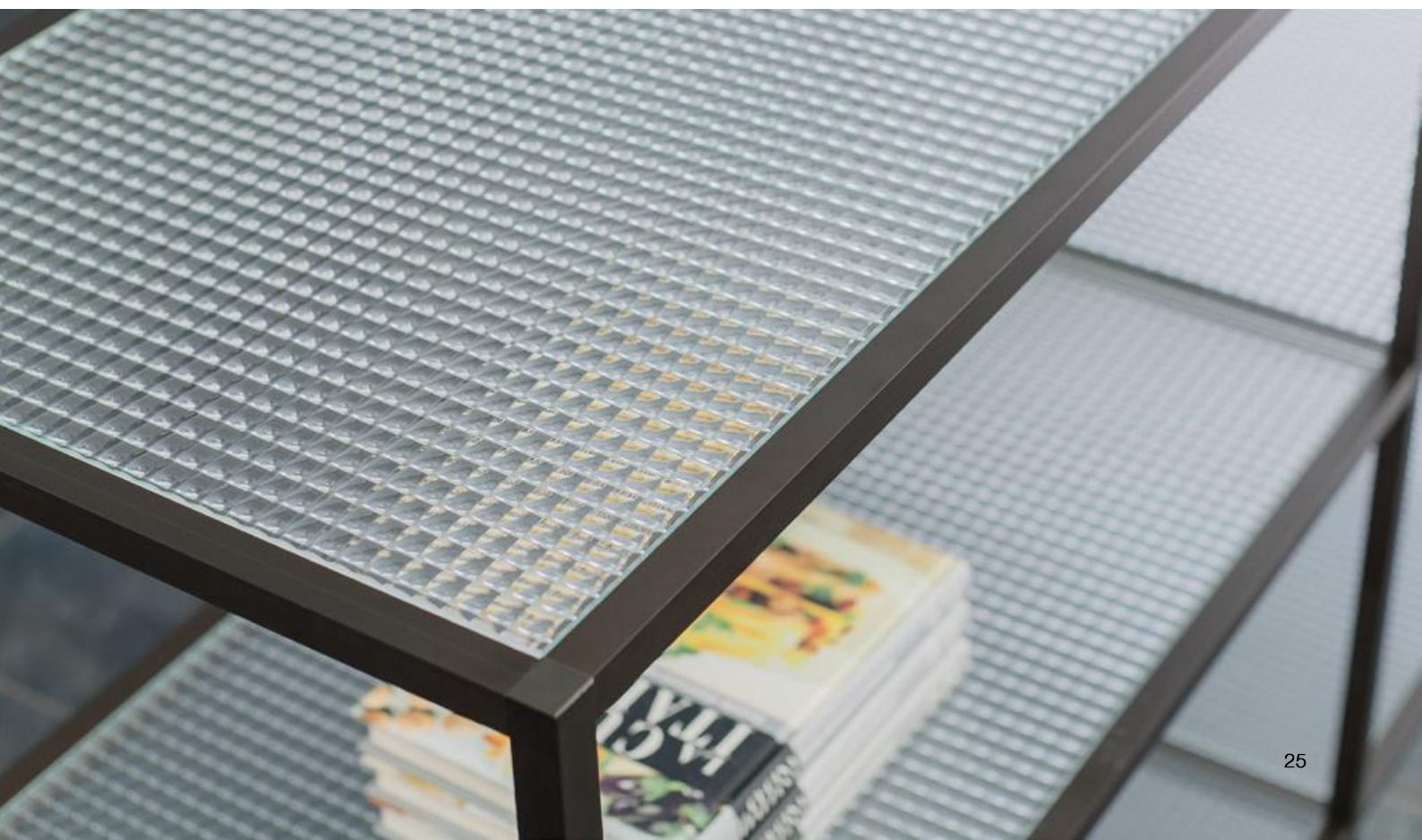
## STACK MODULAR SHELVING

### *For Decorative Open Shelving System*

A new design concept of open shelving / cabinet systems is emerging. More and more enclosed storage areas in the kitchen seem to be fading into this new design concept. The open spaces are increasingly being used as platforms to showcase kitchenware, curated statement pieces of art or accessories.

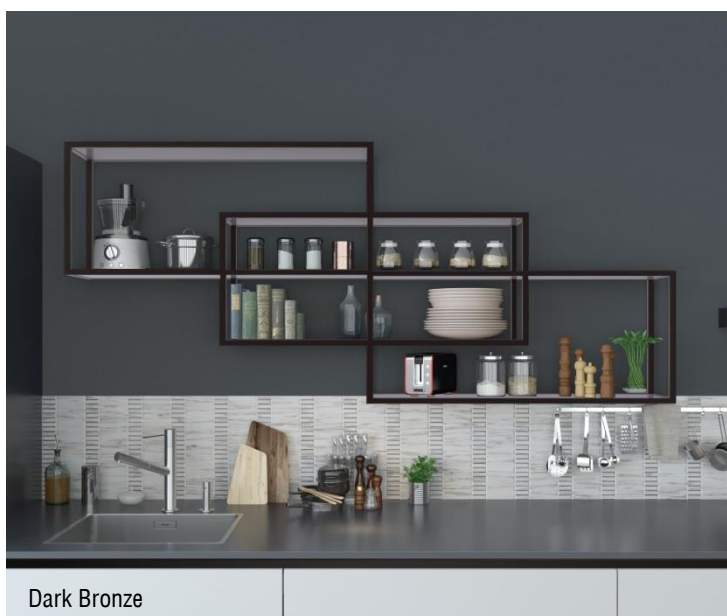
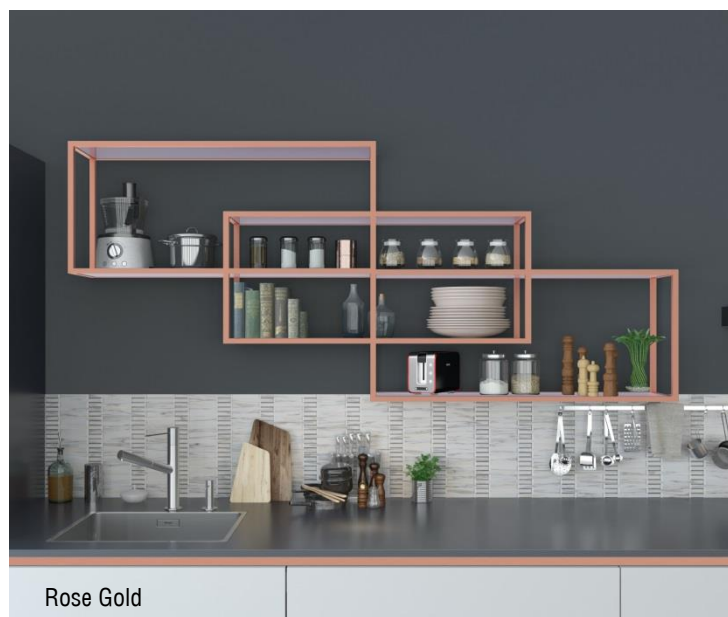
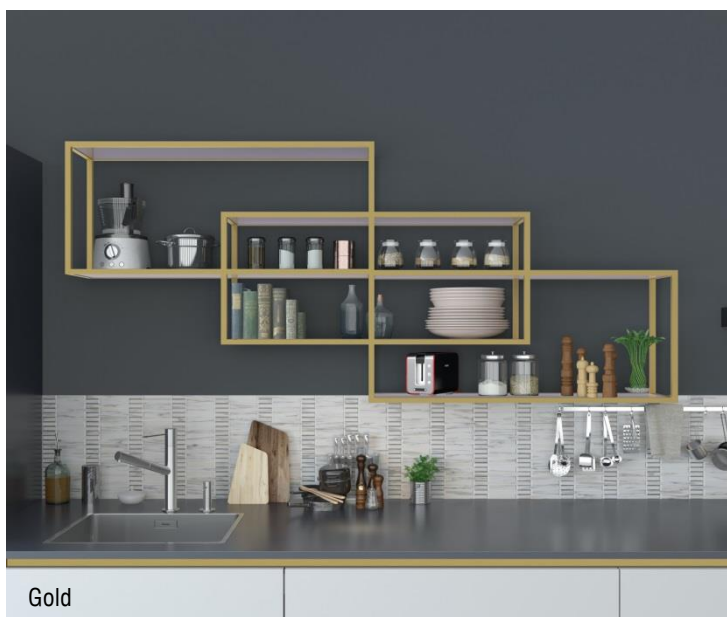
Häfele presents its Profin Range of Stack Modular Shelving Profiles that shapes your entire furniture aesthetics while silently delivering strength, stability and function to the units. These profiles and their accessories enable construction of open shelves with glass or wood and emanate elegance with their sleek and faultless built and finish.





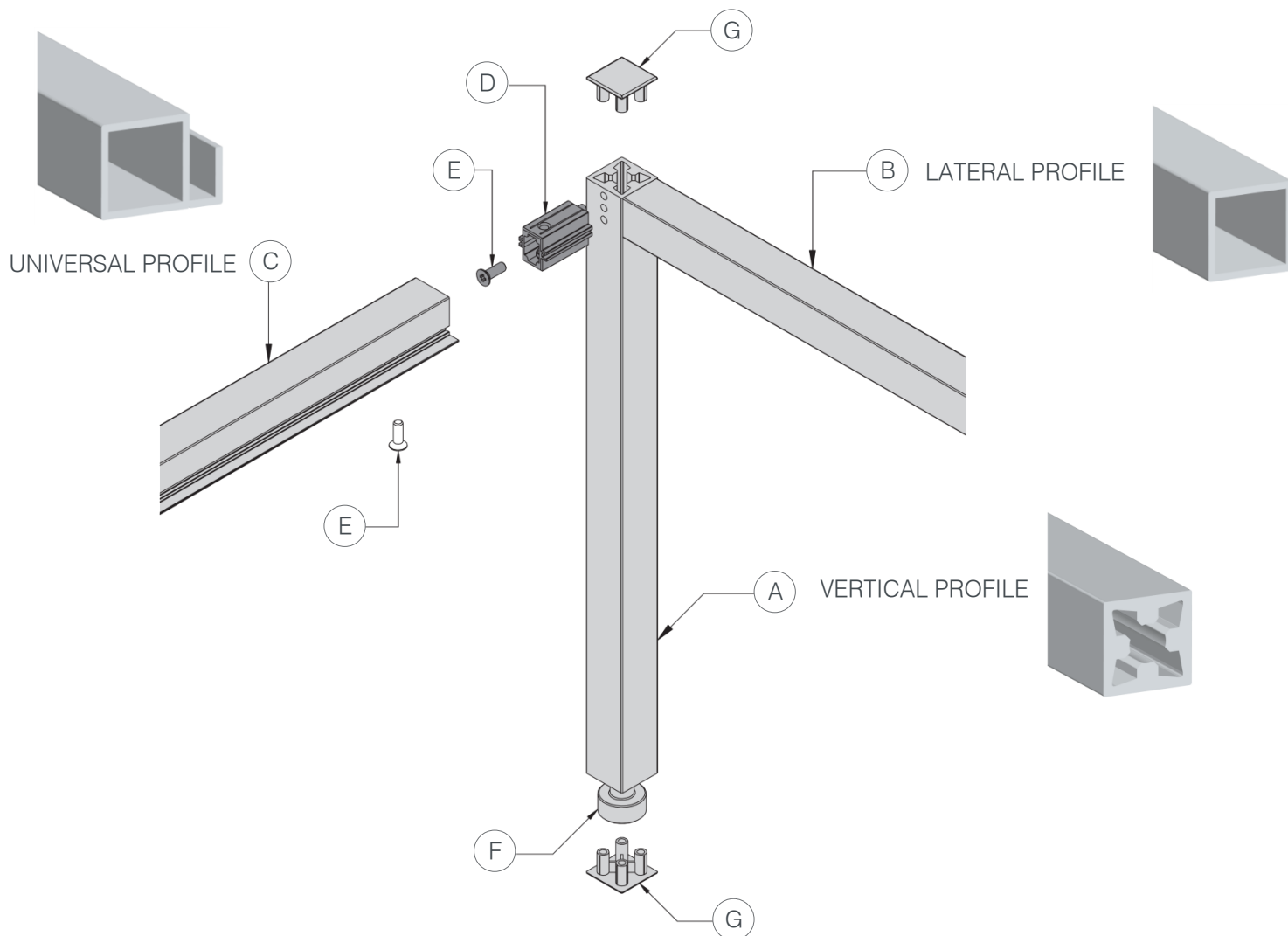


STACK MODULAR SHELVING

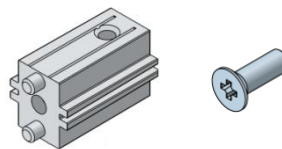


STACK MODULAR SHELVING

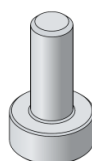
COMPONENTS



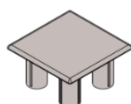
(D) & (E) JOINING BLOCK AND UNIVERSAL SCREW

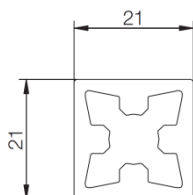
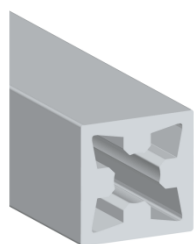


(F) LEVELER



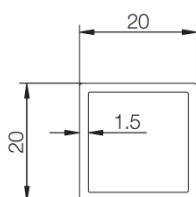
(G) COVER CAP



 STACK MODULAR SHELVING
**A. Vertical Profile**

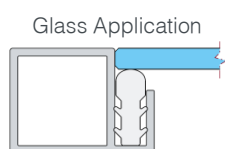
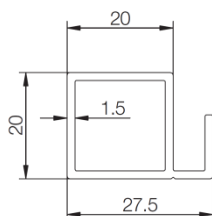
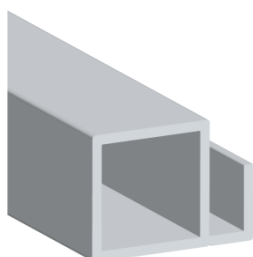
Article no.	793.10.902	793.10.302	793.10.502	793.10.402	793.10.102
Finish	Silver	Graphite	Gold	Rose Gold	Dark Bronze
Material	Aluminium				
Length	2670 mm; Usable Length: 2450 mm				
MRP (INR)	4,100/-	4,100/-	5,750/-	5,750/-	5,750/-

Unit: Piece

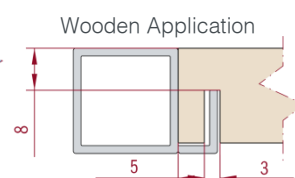
**B. Lateral Profile**

Article no.	793.10.912	793.10.312	793.10.512	793.10.412	793.10.112
Finish	Silver	Graphite	Gold	Rose Gold	Dark Bronze
Material	Aluminium				
Length	2670 mm; Usable Length: 2450 mm				
MRP (INR)	2,900/-	2,900/-	4,250/-	4,250/-	4,250/-

Unit: Piece

**C. Universal Profile**

Glass Application



Wooden Application

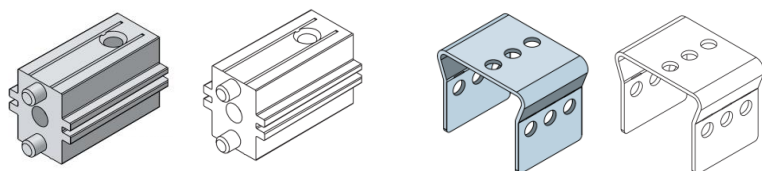
Article no.	793.10.922	793.10.322	793.10.522	793.10.422	793.10.122
Finish	Silver	Graphite	Gold	Rose Gold	Dark Bronze
Material	Aluminium				
Length	2670 mm; Usable Length: 2450 mm				
MRP (INR)	2,900/-	2,900/-	4,250/-	4,250/-	4,250/-

Unit: Piece

## STACK MODULAR SHELVING

### ACCESSORIES FOR PROFILES

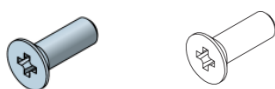
#### D. Joining Block for Profile & Drilling Template for Vertical Profile



Article no.	793.10.991	793.10.996
	Joining Block	Drilling Template
Finish	Zinc Plated	Nickel Plated
Material	Aluminium Die-cast	Steel
MRP (INR)	225/-	1,250/-

Unit: Piece

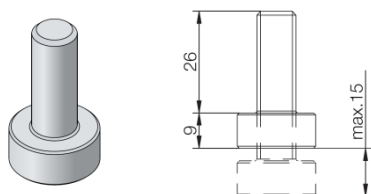
#### E. Universal Screw



Article no.	793.10.992	793.10.993	793.10.994
Finish	Darkened	Nickel Plated	Zinc Plated
MRP (INR)	15/-	15/-	15/-

Unit: Piece

#### F. Leveler

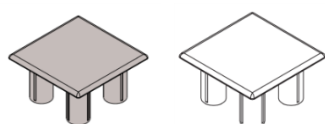


Adjustable leg Ø 20 mm, thread M10

Article no.	793.10.995
Finish	Nickel Plated
Material	Steel
MRP (INR)	1,100/-

Unit: Piece

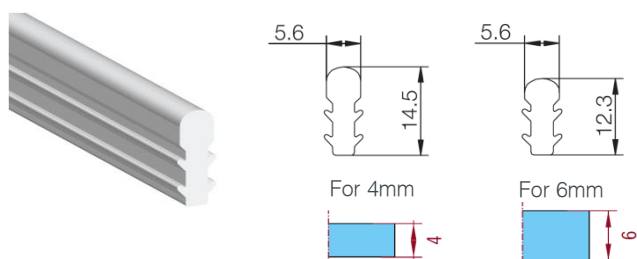
#### G. Cover Cap



Article no.	793.10.990	793.10.390	793.10.590	793.10.490	793.10.190
Finish	Silver	Graphite	Gold	Rose Gold	Dark Bronze
Material	Plastic				
MRP (INR)	250/-	250/-	300/-	300/-	300/-

Unit: Piece

#### H. Gasket for Glass Shelves



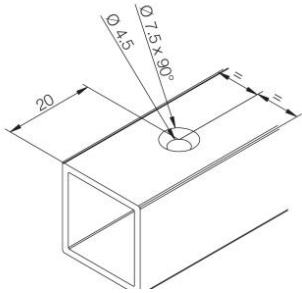
Article no.	793.10.980	793.10.981
For Glass Thickness	4mm	6mm
Material	Rubber	
MRP (INR)	175/-	175/-

Unit: 1 Meter

## STACK MODULAR SHELVING

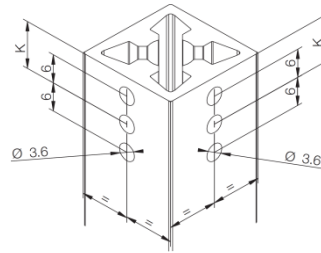
### DRILLING DETAILS

#### For Lateral and Universal Profile



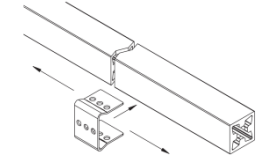
#### For Vertical Profile

##### By Drawing

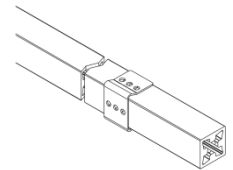


K = 8.7 mm with an end cap at the top  
K = 9.7 mm without an end cap at the top

##### By Template



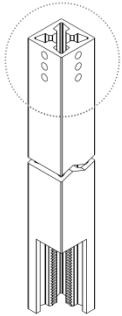
Step 1 : Position the template on the profiles



Step 2 : Mark the holes, remove the template, drill the profile.

### MOUNTING & CONSTRUCTION DETAILS

#### For Freestanding Application



We recommend the use of levelers for a freestanding application. In this case, to install the leveler, thread a M10 hole with a 30 mm depth into the lower part of the vertical profile.

### CALCULATIONS

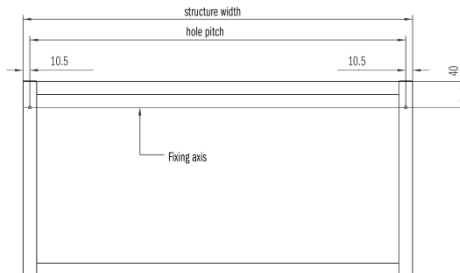
#### For Glass / Wood

- Shelf Depth = Structure Depth – 42mm
- Shelf Width = Structure Width – 42mm

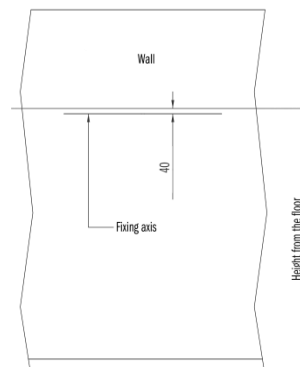
**Note:** The Stack Profiles give you the freedom to design the structure as per your requirement, with no depth, height or width restrictions. It is therefore not possible for us to ascertain the maximum weight carrying capacity. This needs to be determined by the fabricator depending on the dimensions of the structure. These Profiles are not meant for heavy shelving.

#### For Wall Mounting Application

##### Method 1



Drill holes of Ø 4.5 mm on the vertical profile in the position demonstrated in the drawing. The type of hole to be drilled depends on the fixing screw - Type A or Type B (details on the next page).



- Mark the height on the wall from the floor, where you want to mount the structure
- Mark the fixing axis and the hole pitch
- Drill holes into the wall

