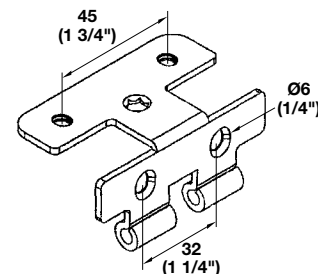


### Five-Knuckle Hinge – Grade 1

- ANSI/BHMA A-156.9-2001 Grade 1 approved
- Universal usage on 3/4" & 13/16" materials
- 14 gauge steel
- Hinge knuckles broached for precision pin alignment and smooth operation
- Hinge leaves punched after forming for precision alignment
- "Easy Hang" feature - requires one person operation for hanging large doors
- Pre-mounted 5 mm Euro Screws
- Universal drill pattern consistent with Aximat® and concealed hinges
- Standard drilling equipment can be used
- Standard 37 mm set back and 32 mm system drilling

Opening angle: **270°**

Offset hole pattern allows for larger mounting screws

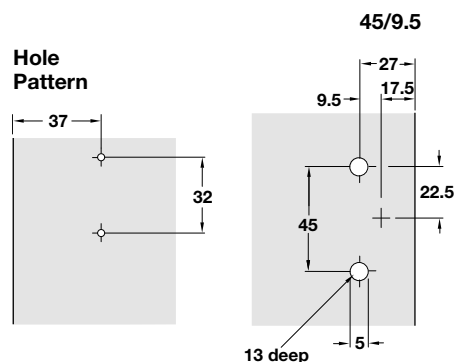


### Advantage 5 K

Material: Steel, powder-coated or plated

Finish	Item No.
powder-coated matt black	354.65.300
powder-coated dull chrome	354.65.200
powder-coated pearl	354.65.700
plated brushed nickel	354.65.410
powder-coated matt nickel	354.65.400

### Press-fit Drilling diagram



### Stainless Steel Advantage 5 K

Material: 304 Stainless Steel

Item No.
354.65.000

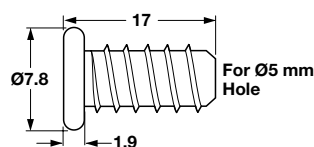
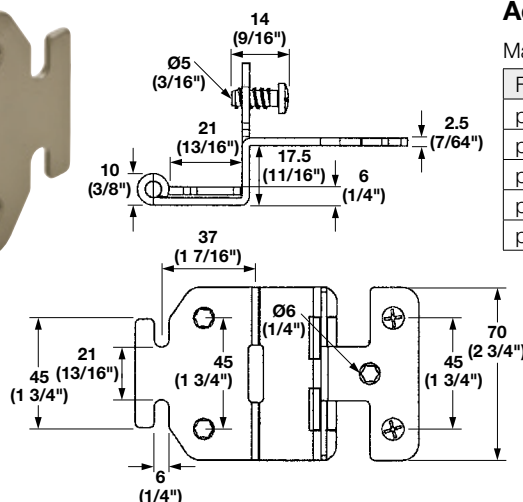
**Supplied With**  
Screws

### Special Varianta Screw

Material: Steel

Finish	Item No.
nickel-plated	013.27.702

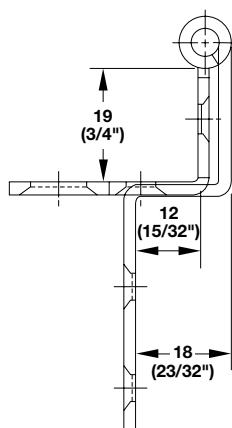
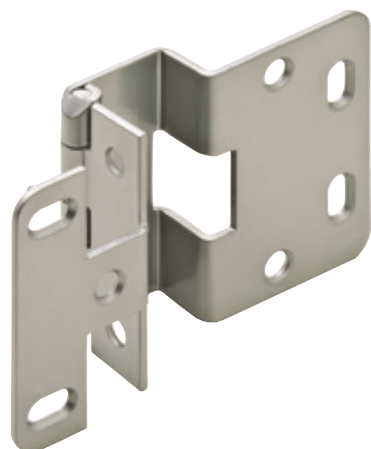
**Order Supplied With**  
5000 pcs.



### Five-Knuckle Hinge – Grade 1

- Industry Standard 2 3/4" five-knuckle hinge
- Durable .090" steel
- Hospital tips and corners for safety
- 270° opening angle
- Non-removable knurled pin
- Tumbled to remove sharp edges
- Tested in accordance with ANSI/BHMA

Opening angle: **270°**



Hole Pattern:  
32 mm centers  
37 mm setback

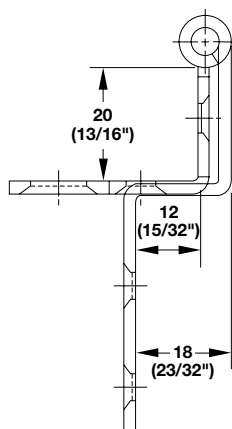
- For 3/4" door thickness

Material: Steel

Finish	Item No.
powder-coated chrome	354.65.220
powder-coated black	354.65.320
dull chrome plated	354.65.420

#### Note

Screws not included. Hinges require #8 Wood Screws or 5 mm with 7.8 mm head Euro screws



Hole Pattern:  
32 mm centers  
37 mm setback

- For 13/16" door thickness

Material: Steel

Finish/Color	Item No.
powder-coated chrome	354.65.221
powder-coated black	354.65.321
dull chrome plated	354.65.421
stainless steel	354.65.021

#### Note

Screws not included. Hinges require #8 Wood Screws or 5 mm with 7.8 mm head Euro screws